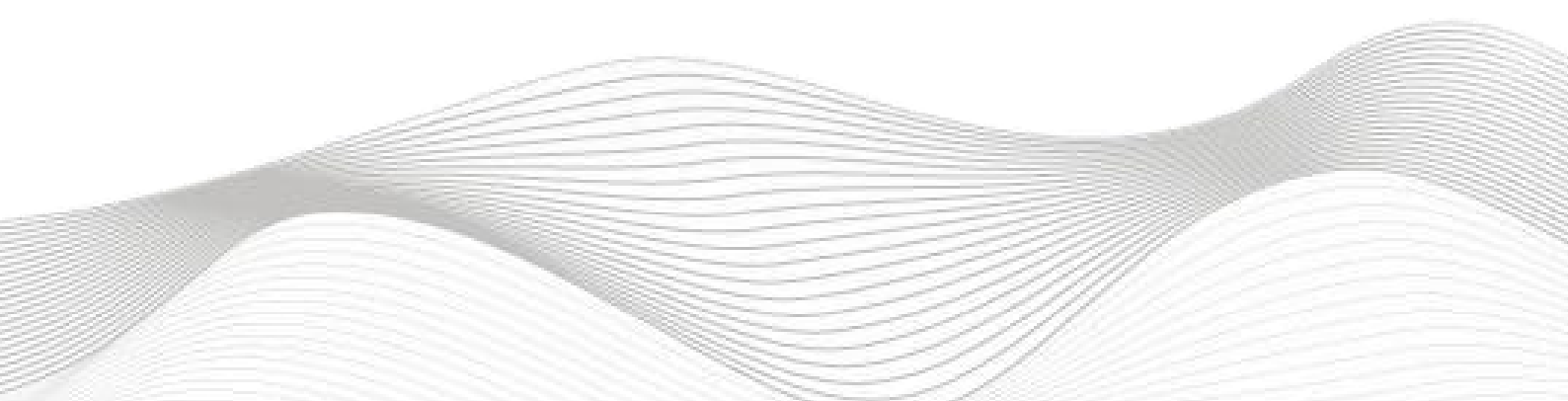


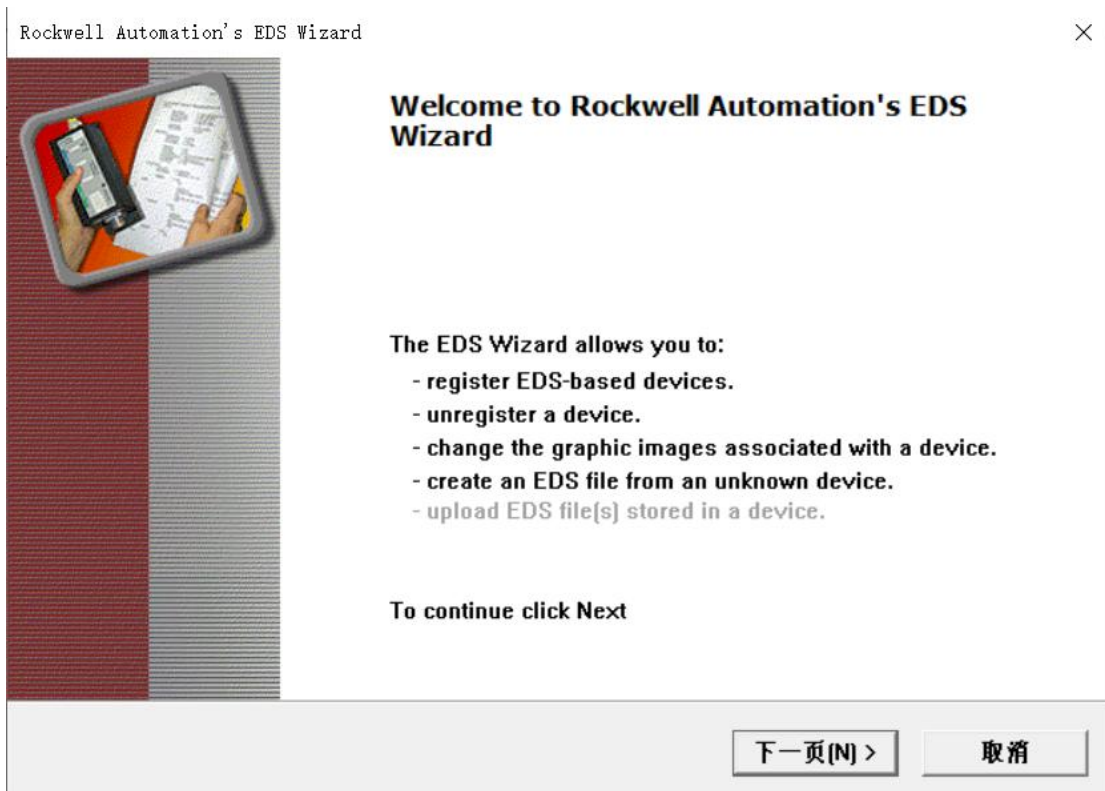
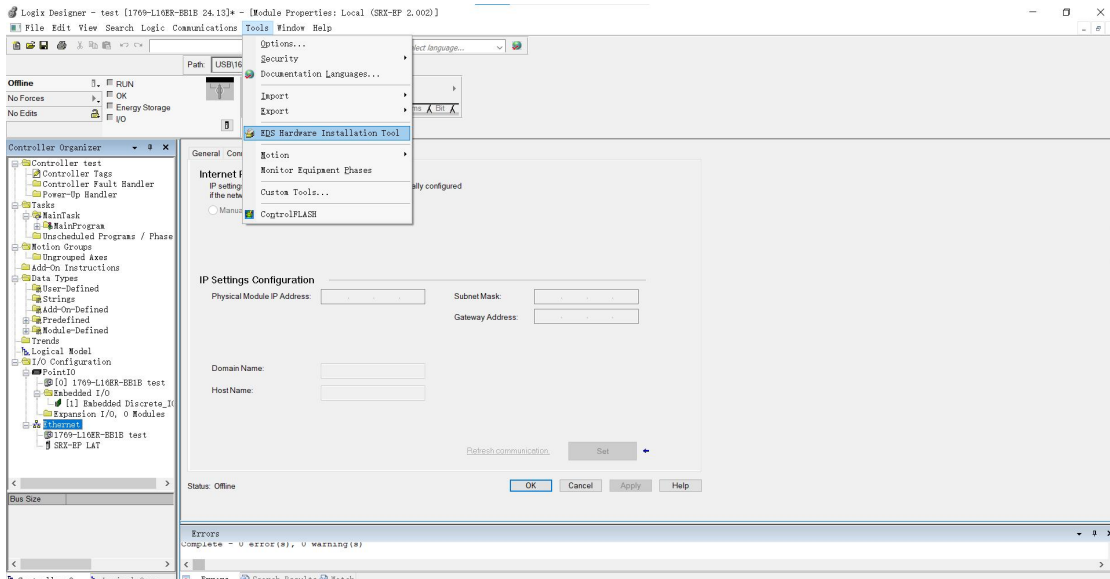


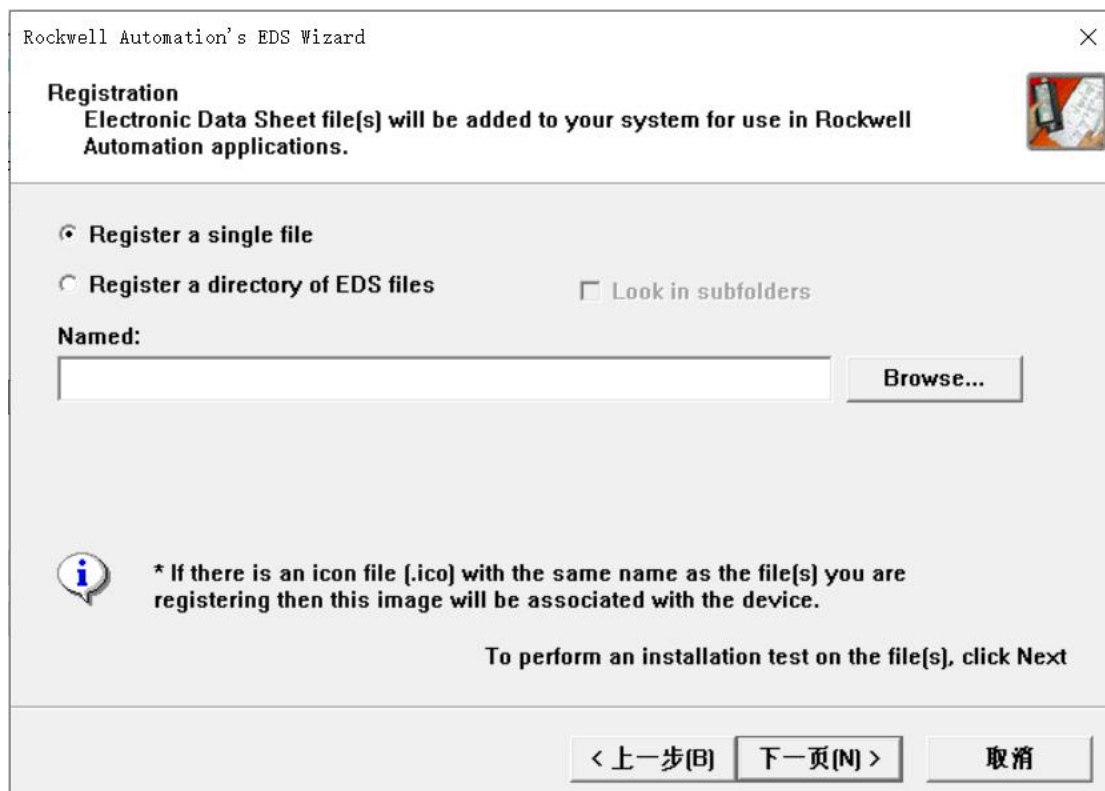
# 技术笔记

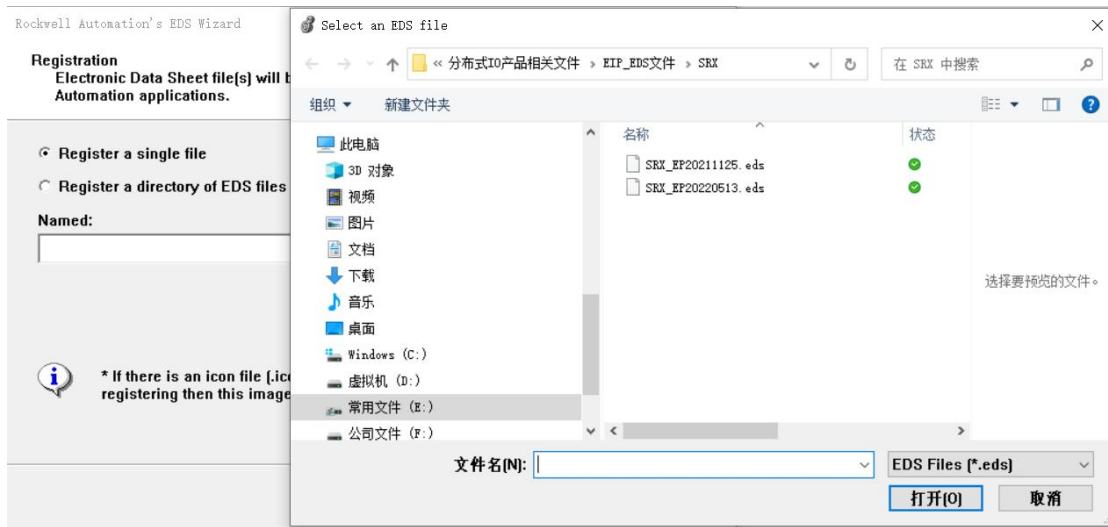
Ethernet/ip 模块在 ABPLC 上的使用

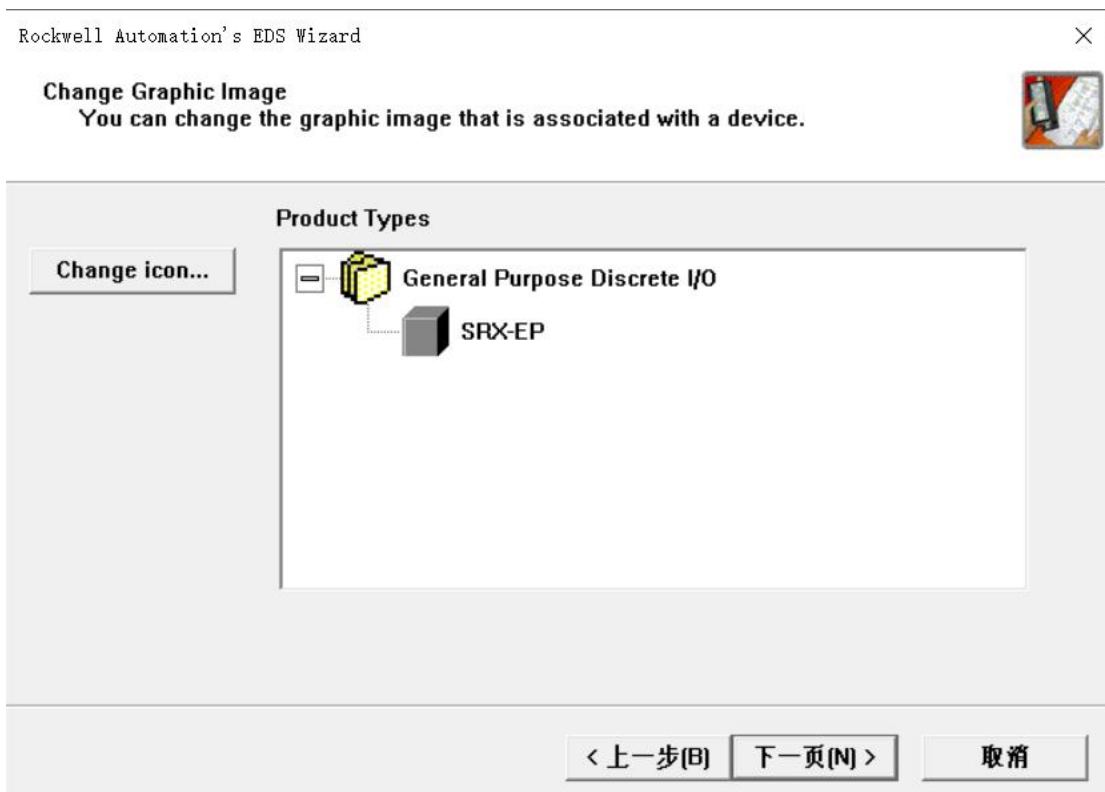
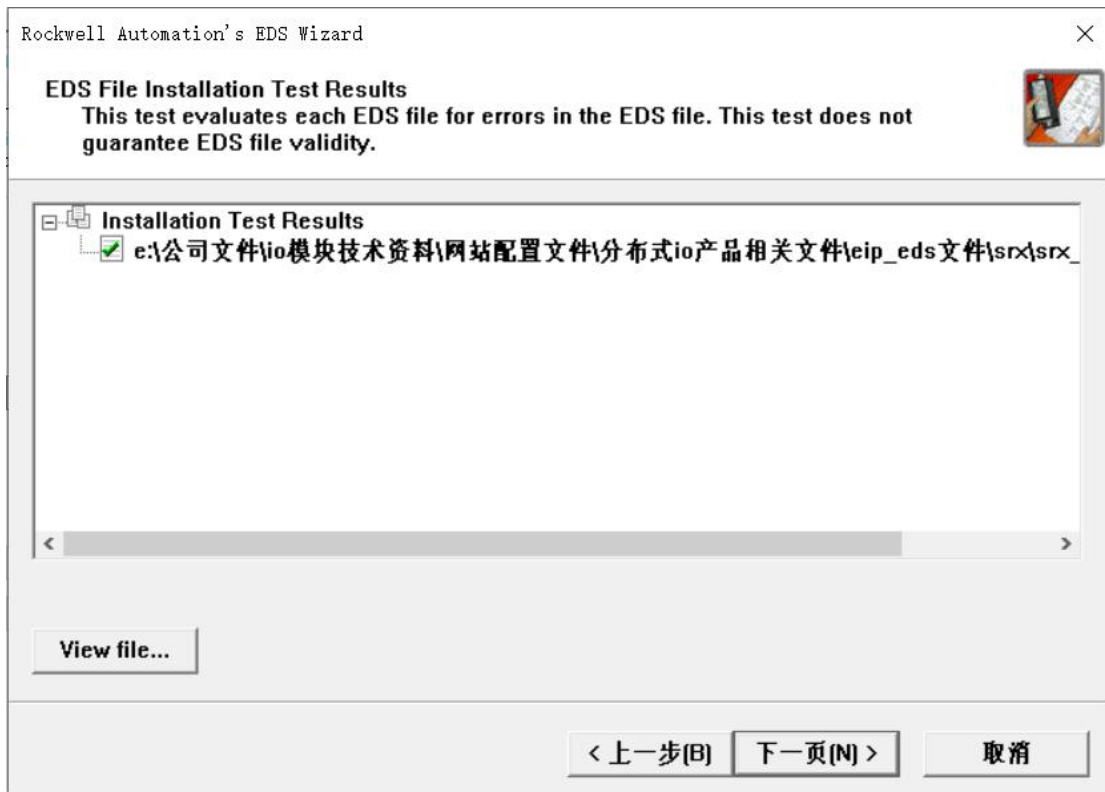


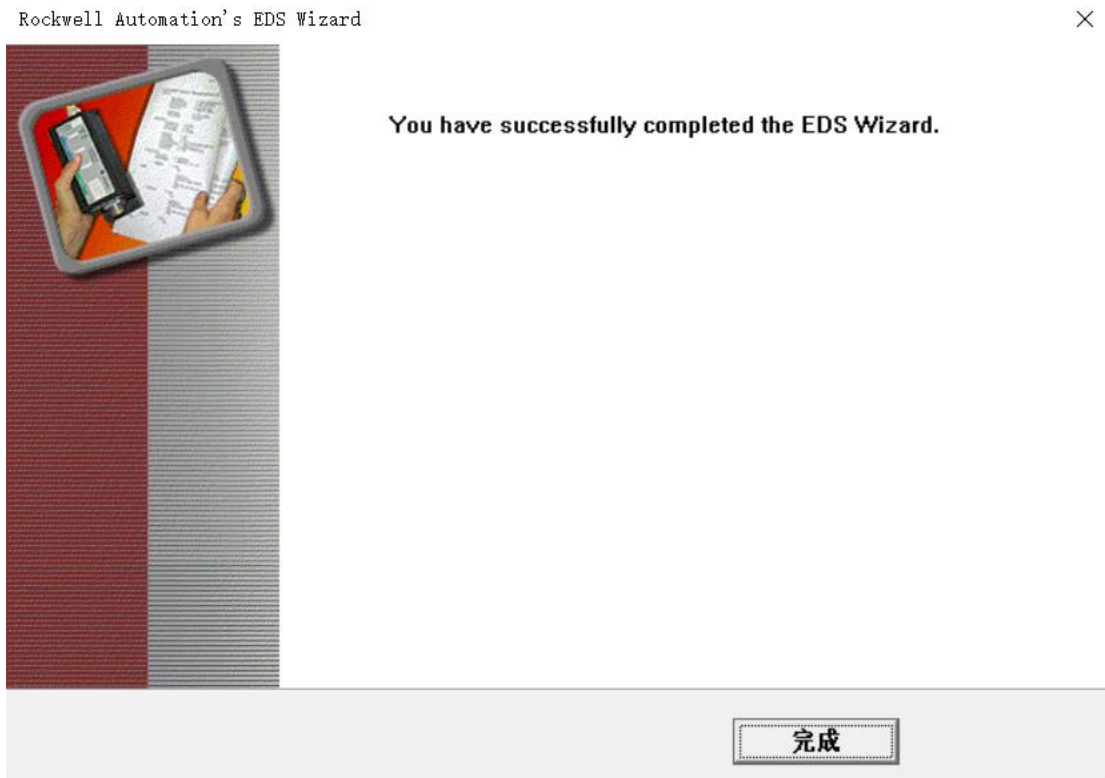
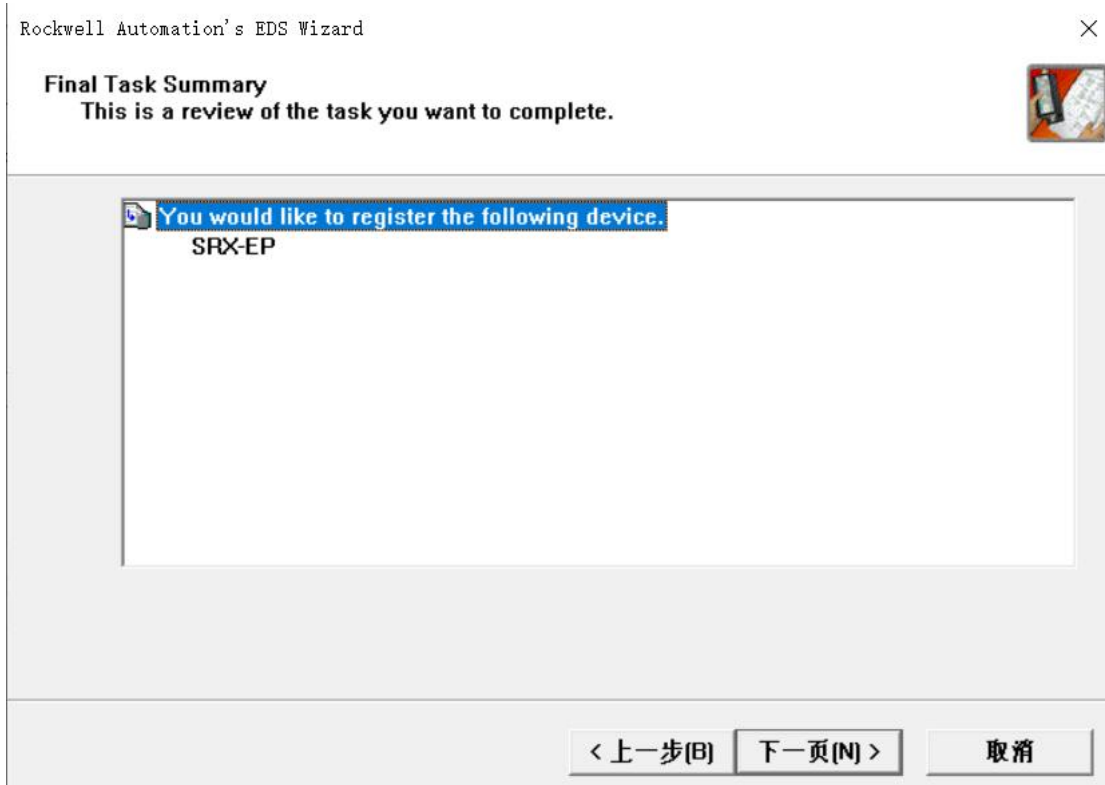
# 1. EDS文件添加



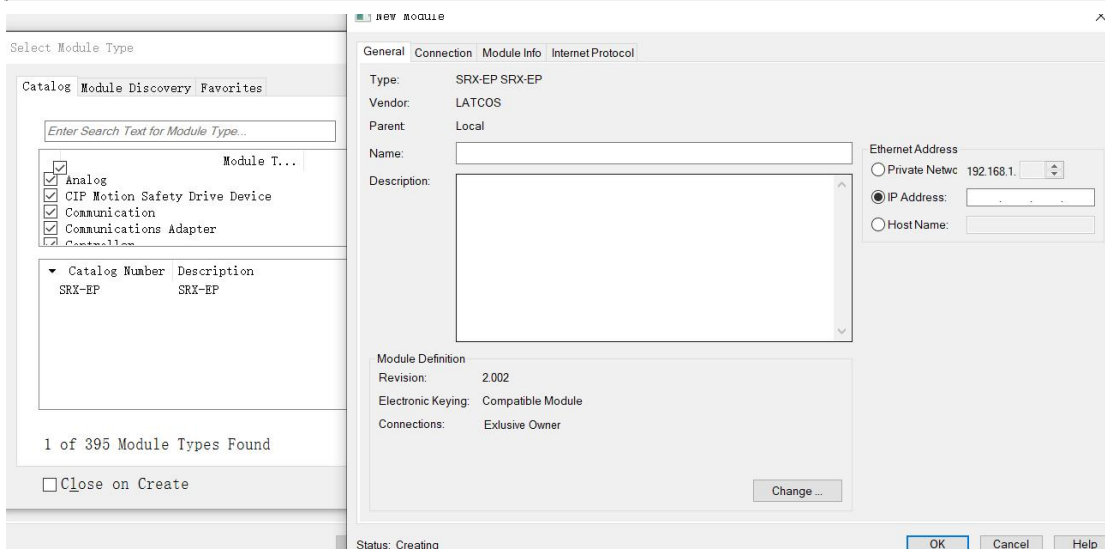
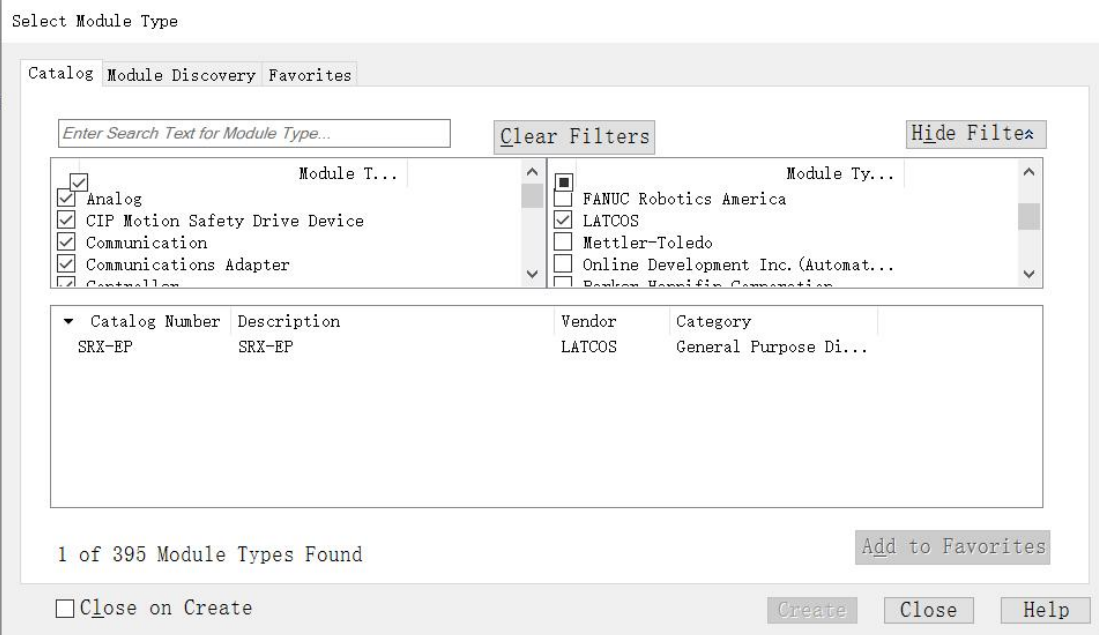
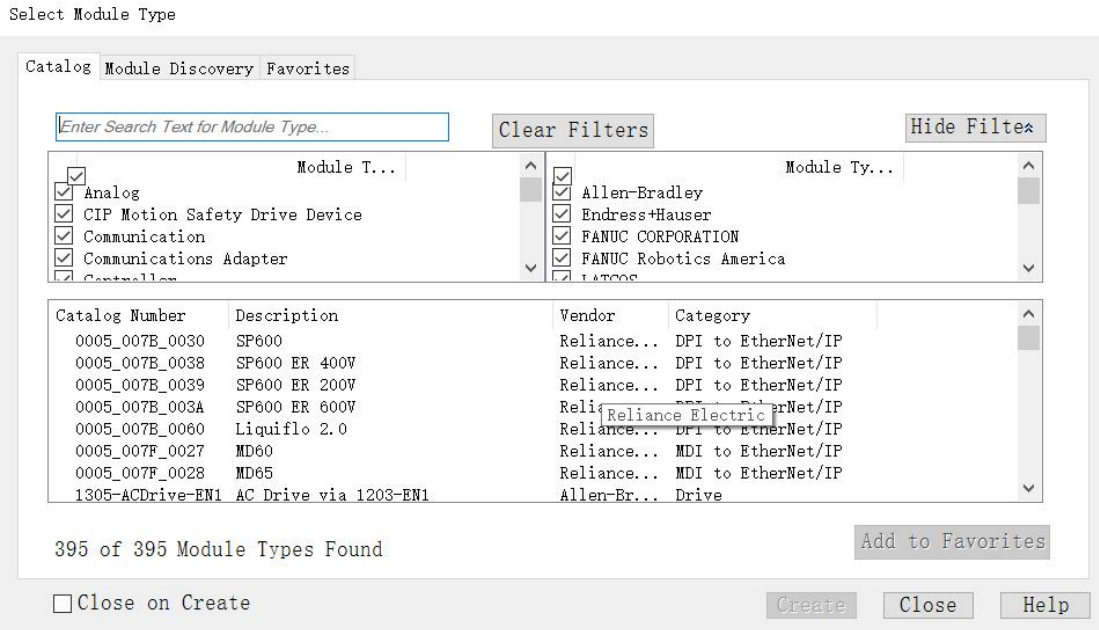


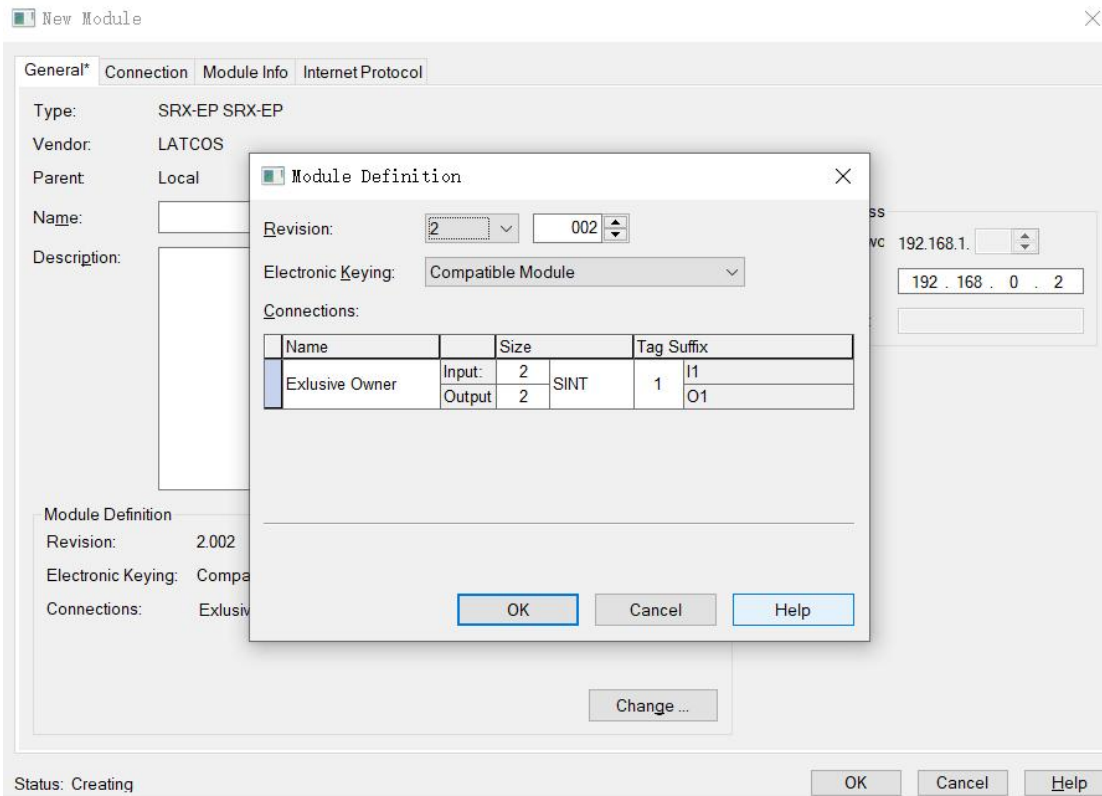
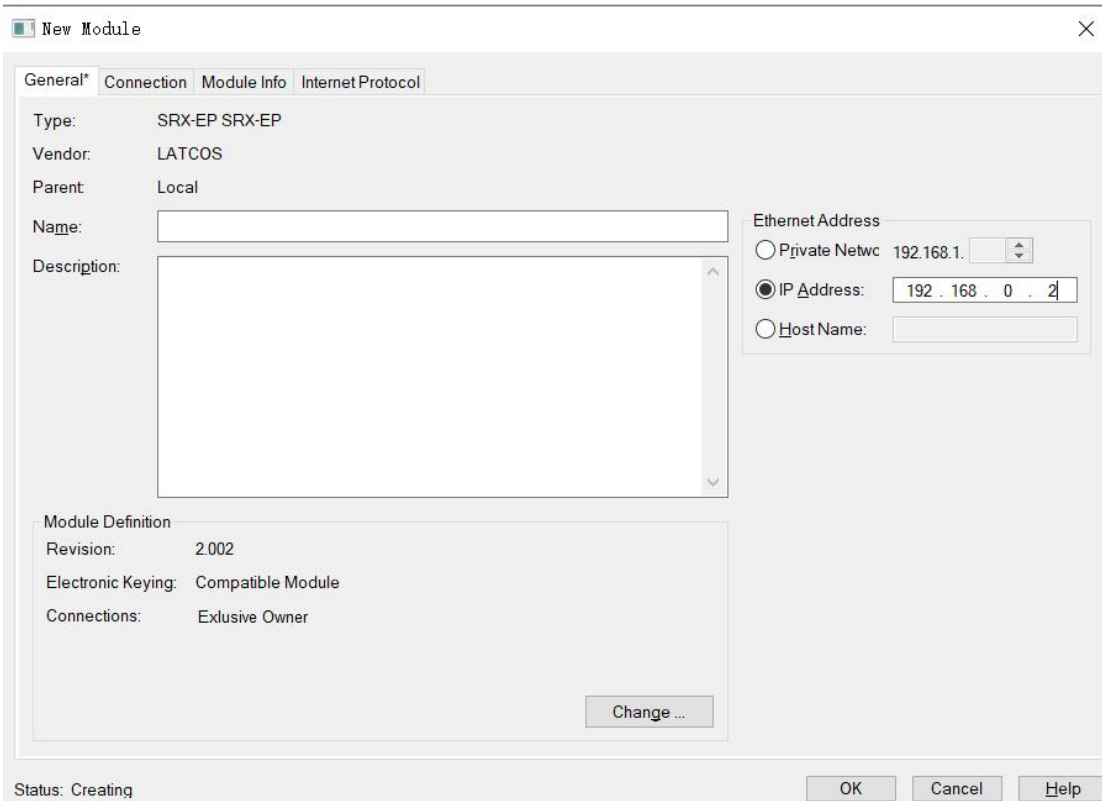




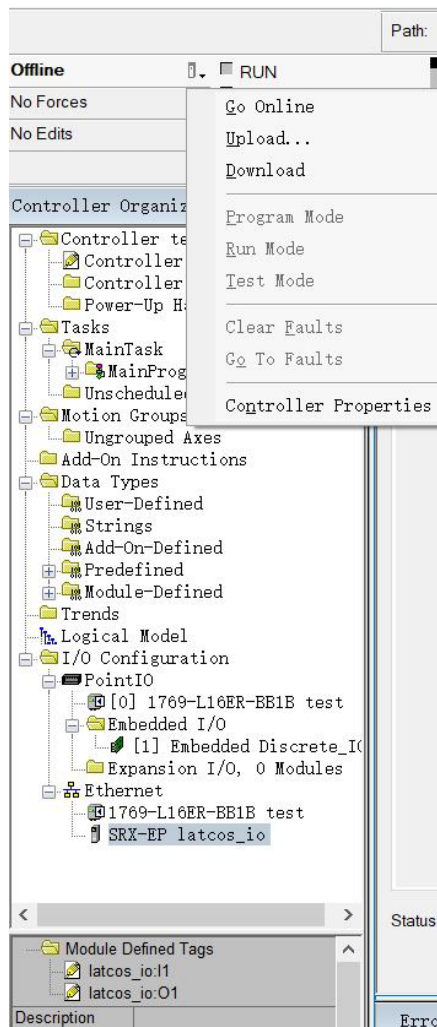
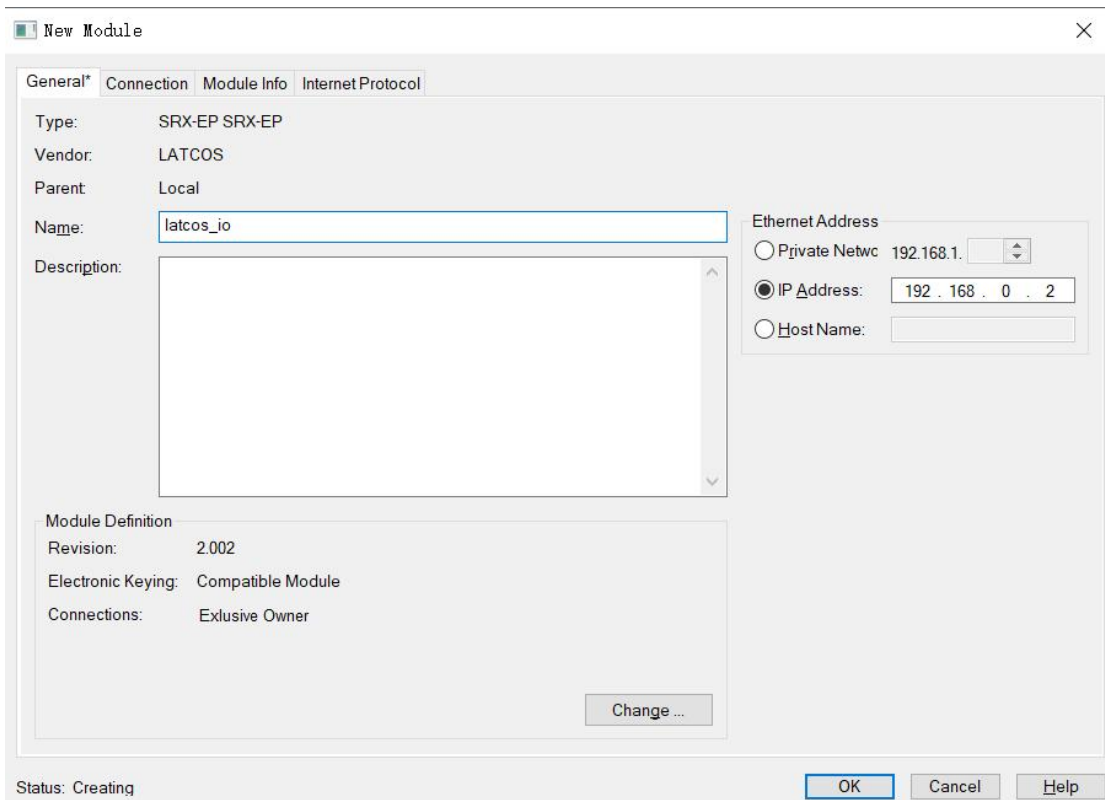


## 2.从站添加









官方网站



先进自动化控制及工业网络技术



无锡凌科自动化技术有限公司 [www.latcos.cn](http://www.latcos.cn)

公司电话：0510-85888030

公司地址：江苏省无锡市惠山区清研路 3 号华清创智园 7 号楼 701 室